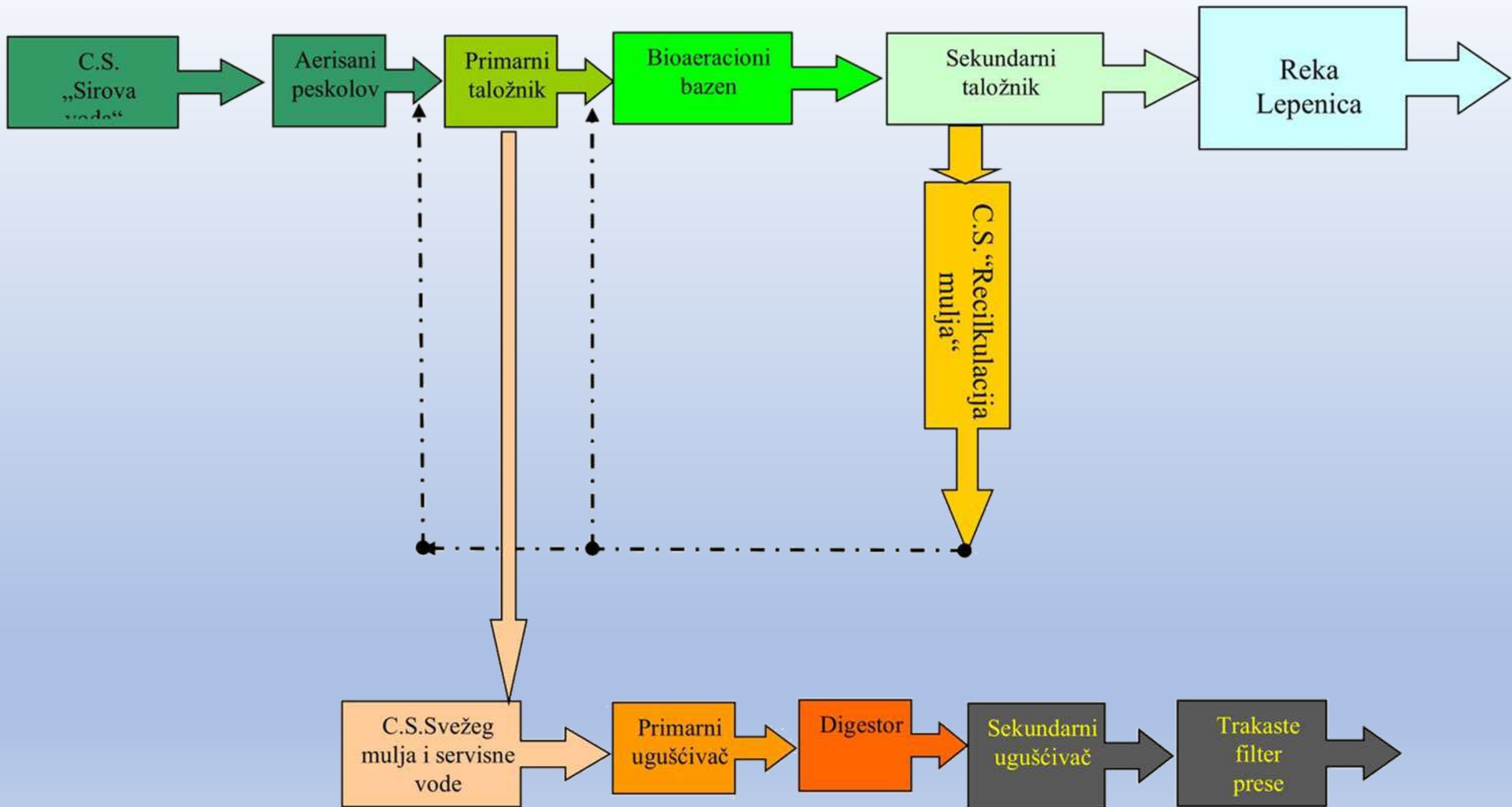


EFIKASNOST PREČIŠĆAVANJA OTPADNE VODE NA SPOV “CVETOJEVAC”

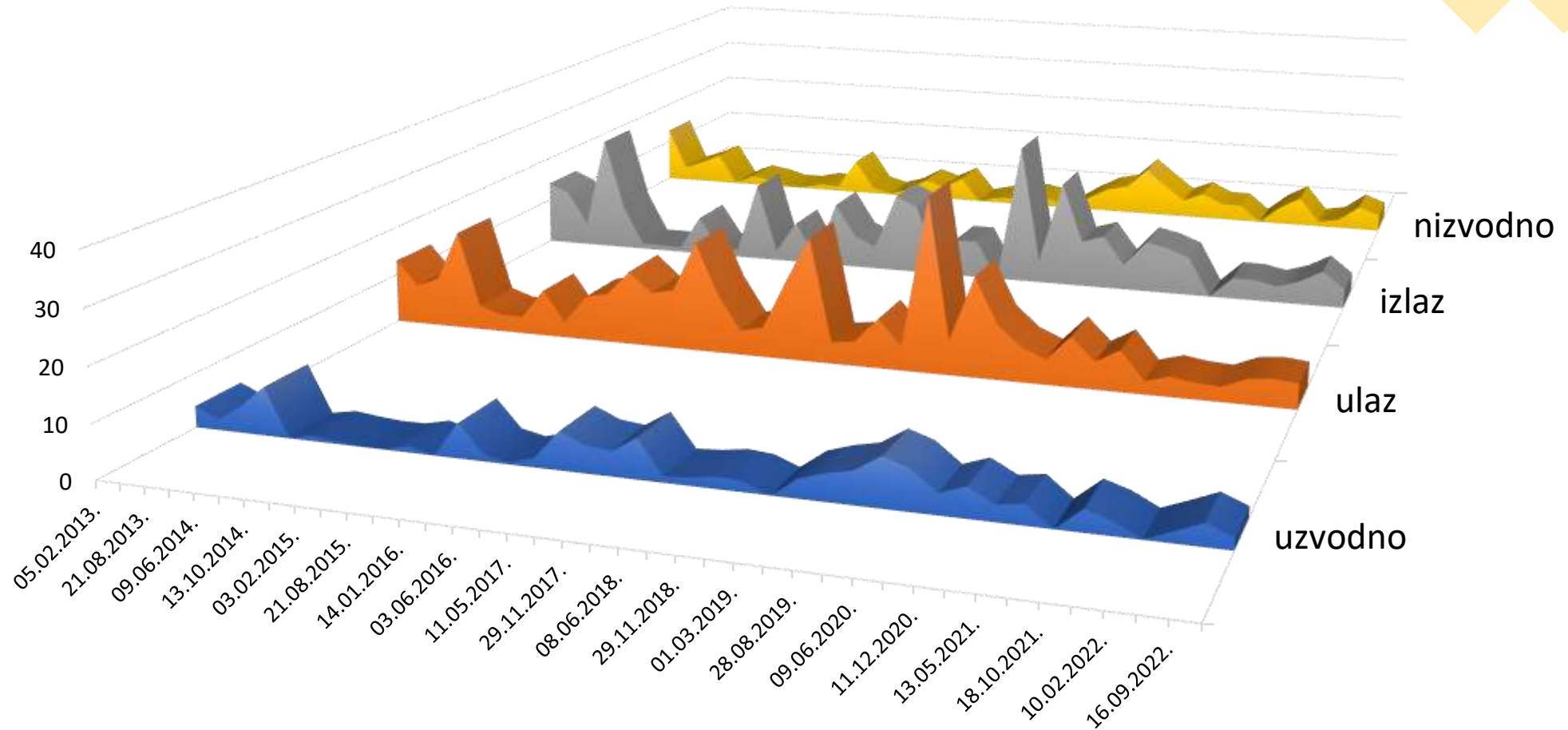
Goran Gavrilović, spec.hem.
Ivan Bogdanović, dipl.maš.inž.





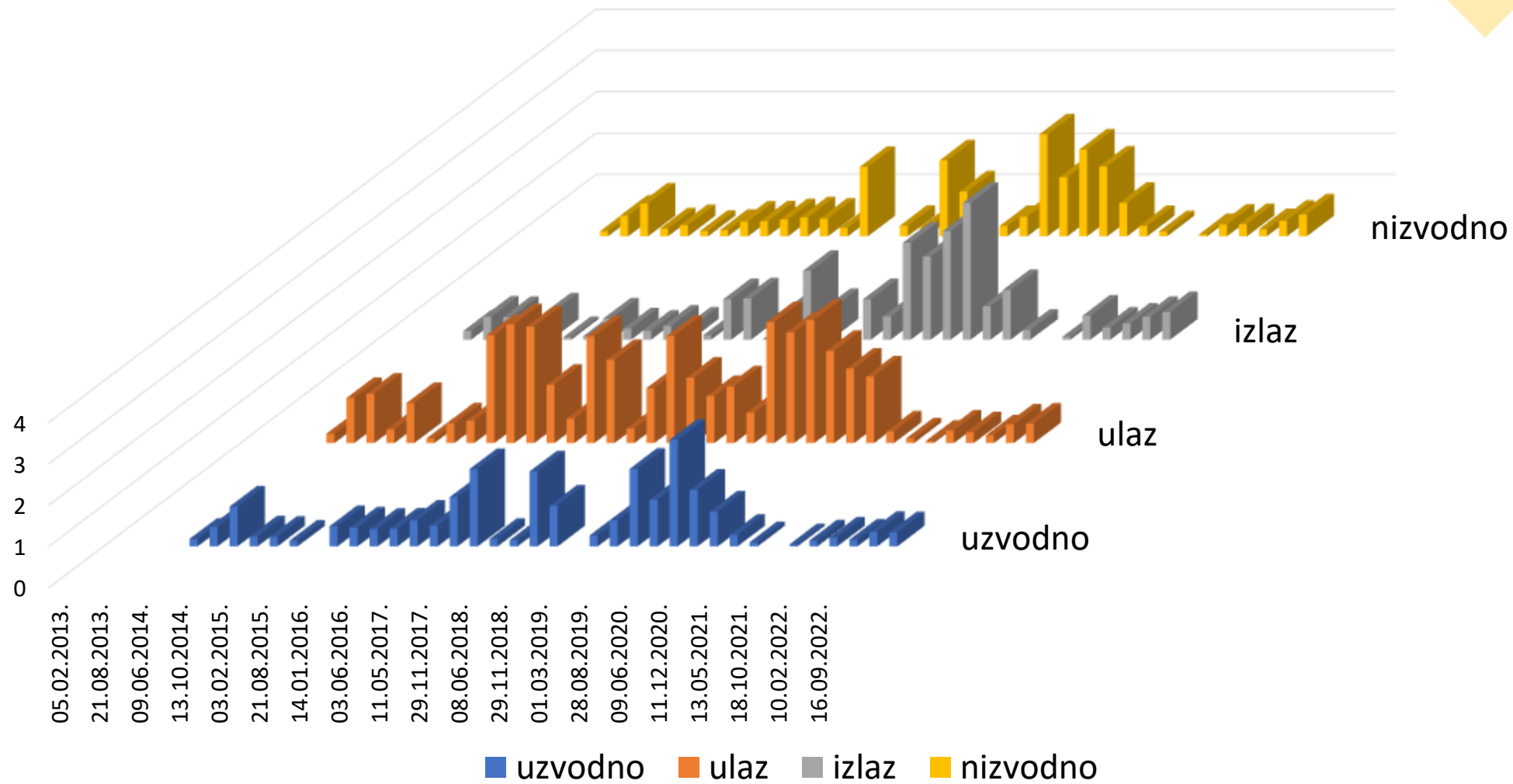


	NO ₃	NO ₂	NH ₄	HPK	BPK	suspend.	ost.isp.nefilt.	KMnO ₄	P
Uzvodno	1,26	0,02	3,38	28,19	25,15	44,49	511,09	47,44	0,66
Ulaz	2,03	0,04	9,50	64,20	56,68	84,18	588,77	134,44	1,26
Izlaz	1,08	0,02	8,71	37,72	33,33	37,24	567,37	82,17	0,76
Nizvodno	1,30	0,03	3,78	30,28	26,87	45,22	506,67	45,96	0,63



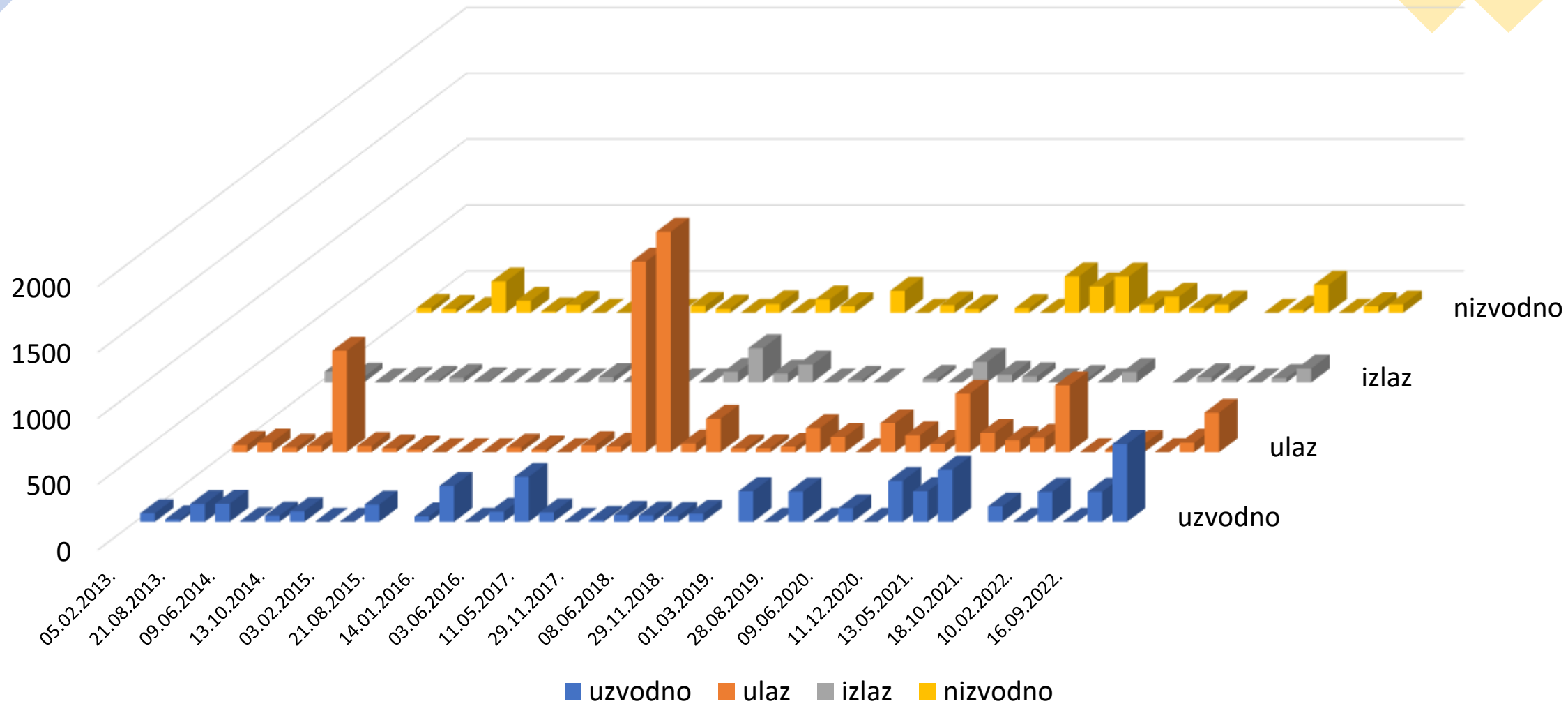
■ uzvodno ■ ulaz ■ izlaz ■ nizvodno

ukupni P

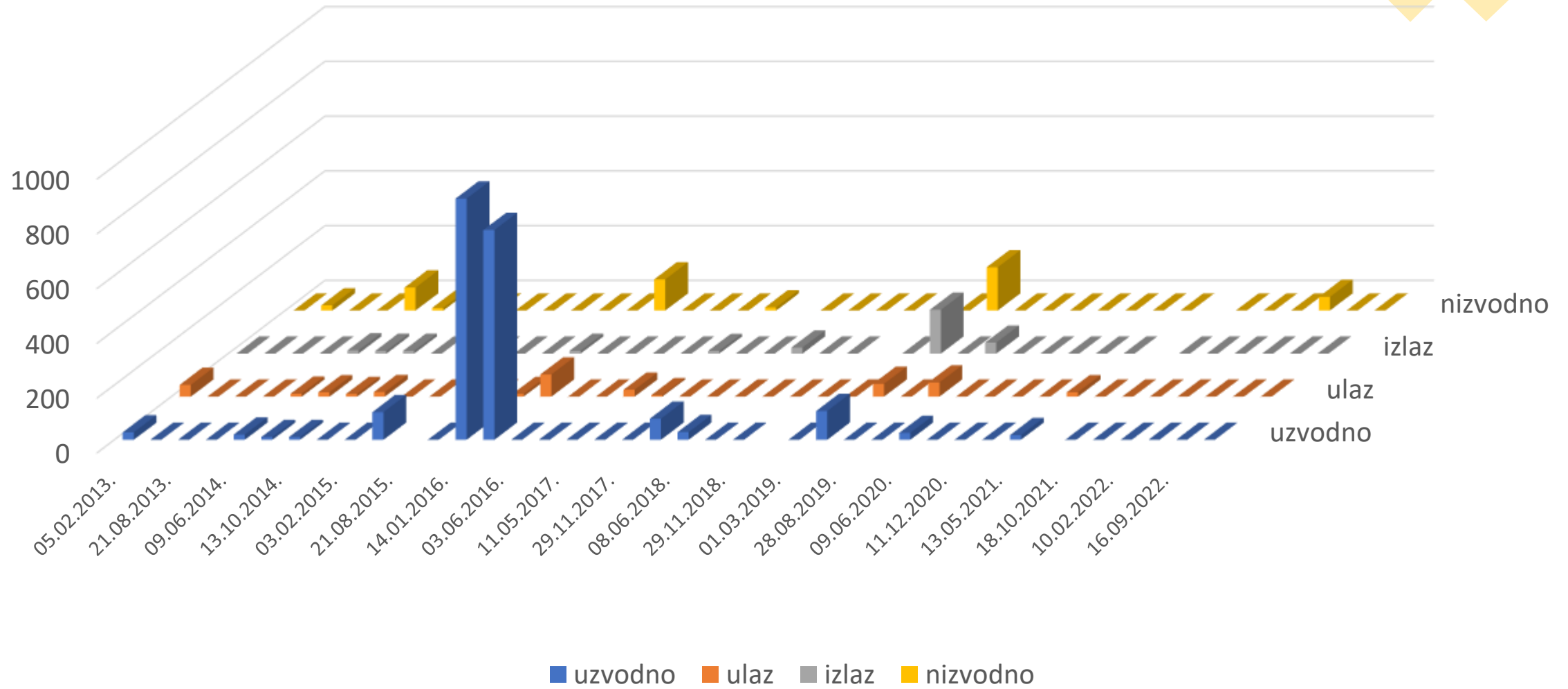


	Ni	Zn	Cu	Cd	Pb	Cr	Fe	P
Uzvodno	55,84	116,30	22,94	0,72	5,51	28,57	480,15	0,66
Ulaz	8,34	180,21	23,44	0,68	109,72	17,91	1869,22	1,26
Izlaz	7,21	37,02	9,02	0,74	7,92	15,40	351,13	0,76
Nizvodno	12,34	66,32	25,45	0,73	5,95	22,43	564,62	0,63

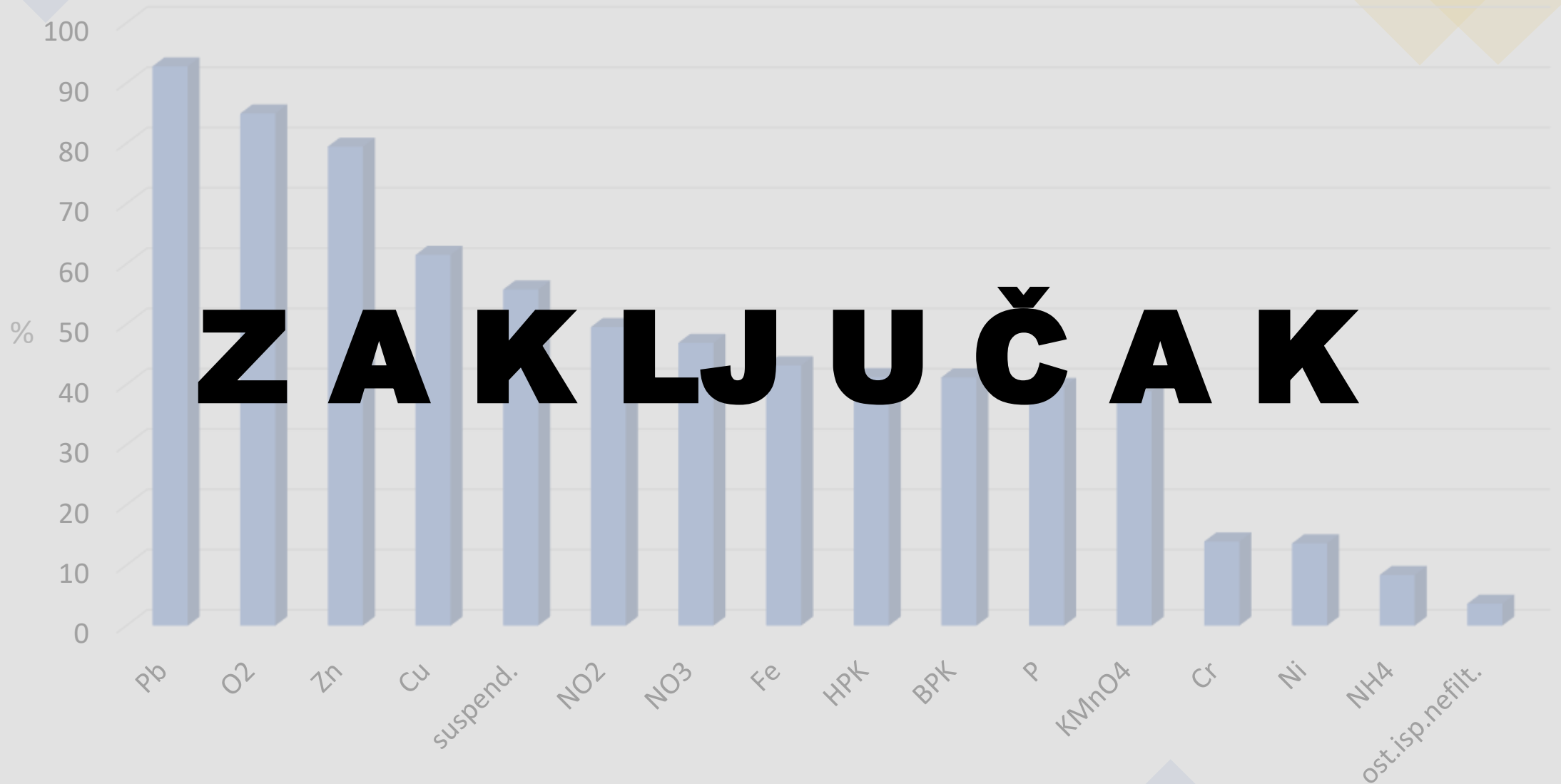
Zn



Ni



Smanjenje koncentracije ulaz – izlaz



A large flock of birds, possibly pigeons, is flying across a clear blue sky. Below them, a wastewater treatment plant is visible, featuring several rectangular basins with blue water and green sludge. The plant is surrounded by green grass and trees with autumn foliage. In the background, there are rolling hills under a clear sky.

H V A L A N A P A Ź N J I